

# MONACO COMPONENTS, INC.

EXTERNAL DRIVE STYLE      ELECTRO-MAGNETIC

**7000  
series**

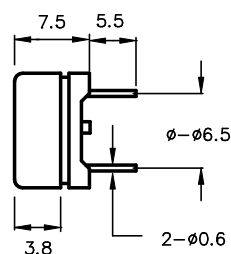
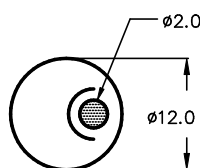
- Compact design.
- Off center sound emission hole
- Lightweight.

MODEL	MMF-7146	MMF-7148	MMF-7150
RATED VOLTAGE	1.5 V		
OPERATING VOLTAGE	1 - 2 V		
RATED CURRENT *	70 mA MAX.		10 mA MAX.
COIL RESISTANCE	6.5 ± 1.0 OHMS		50.0 ± 7.5 OHMS
DRIVE CIRCUIT	EXTERNAL		
COIL IMPEDANCE **	16 OHMS	22 OHMS	140 OHMS
SOUND PRESSURE *	85 dBA MIN. @ 10 cm	85 dBA MIN. @ 10 cm	70 dBA MIN. @ 10 cm
RESONANT FREQUENCY	2048 Hz		
tone	DEPENDENT ON DRIVE CIRCUIT USED		
CONNECTION STYLE	PCB MOUNT (PINS)		
OPERATING TEMPERATURE	-20° to +60° C		

\* VALUE AT RATED VOLTAGE (RESONANT FREQUENCY, 1/2 DUTY SQUAREWAVE)

\*\* RESONANT FREQUENCY, SINEWAVE, CURRENT 60 MICRO-AMPS

MMF-7146  
MMF-7148  
MMF-7150



NORYL SEI HOUSING MATERIAL

ALL DIMENSIONS IN mm

SPECIFICATIONS SUBJECT TO CHANGE WITHOUT NOTIFICATION / MODELS SHOWN SUBJECT TO LIMITED WARRANTY

**SALES OFFICE (516)-767-6644**

CORPORATE OFFICE

P.O. Box 575, Scotch Plains, NJ. 07076

Phone: (908)-322-2977 Fax: (908)-322-2358

E-mail: [info@monacocomponents.com](mailto:info@monacocomponents.com)

[www.monacocomponents.com](http://www.monacocomponents.com)