

MONACO COMPONENTS, INC.

EXTERNAL DRIVE STYLE ELECTRO-MAGNETIC

**7000
series**

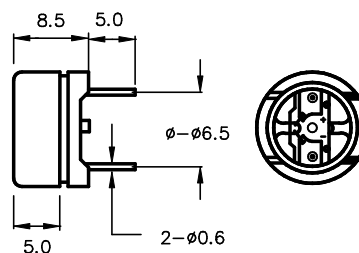
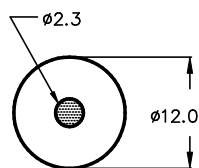
- Compact design.
- Available with PCB mount (pins) or leadwires.
- Lightweight.

MODEL	MMF-7121	MMF-7122	MMF-7123	MMF-7124	MMF-7125	MMF-7126
RATED VOLTAGE	1.5 V					
OPERATING VOLTAGE	1 - 2 V					
RATED CURRENT *	30 mA MAX.		10 mA MAX.			
COIL RESISTANCE	16.0 ± 4.5 OHMS		50.0 ± 7.5 OHMS		42.0 ± 5.0 OHMS	
DRIVE CIRCUIT	EXTERNAL					
COIL IMPEDANCE **	40 OHMS		140 OHMS		80 OHMS	
SOUND PRESSURE *	85 dBA MIN. @ 10 cm		80 dBA MIN. @ 10 cm			
RESONANT FREQUENCY	2048 Hz					
tone	DEPENDENT ON DRIVE CIRCUIT USED					
CONNECTION STYLE	WIRES	PINS	WIRES	PINS	WIRES	PINS
OPERATING TEMPERATURE	-20° to +60° C					

* VALUE AT RATED VOLTAGE (RESONANT FREQUENCY, 1/2 DUTY SQUAREWAVE)

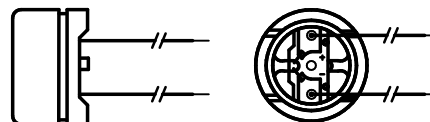
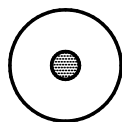
** RESONANT FREQUENCY, SINEWAVE, CURRENT 60 MICRO-AMPS

MMF-7122
MMF-7124
MMF-7126



ABS OR NORYL SEI HOUSING MATERIAL
FOR NORYL, ADD "N" TO ABOVE MODEL NUMBER

MMF-7121
MMF-7123
MMF-7125



ALL DIMENSIONS IN mm

SPECIFICATIONS SUBJECT TO CHANGE WITHOUT NOTIFICATION / MODELS SHOWN SUBJECT TO LIMITED WARRANTY

SALES OFFICE (516)-767-6644

CORPORATE OFFICE

P.O. Box 575, Scotch Plains, NJ. 07076

Phone: (908)-322-2977 Fax: (908)-322-2358

E-mail: info@monacocomponents.com

www.monacocomponents.com