

# MONACO COMPONENTS, INC.

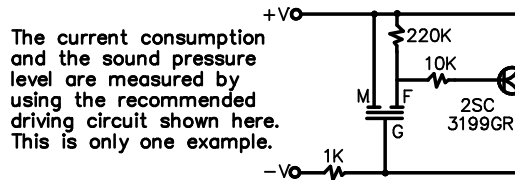
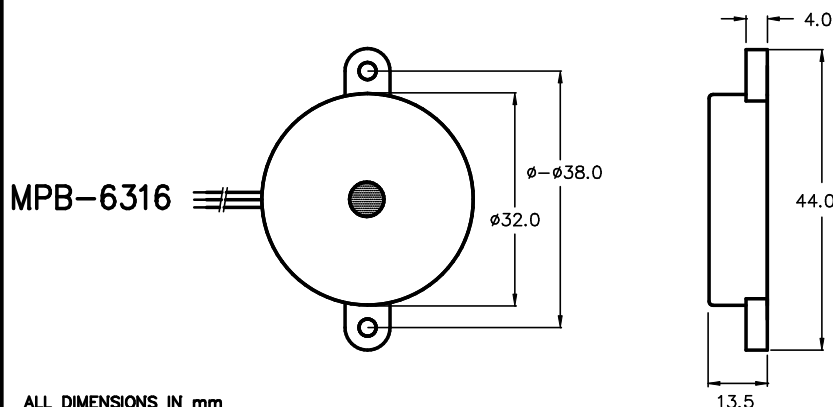
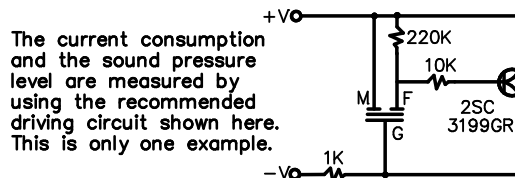
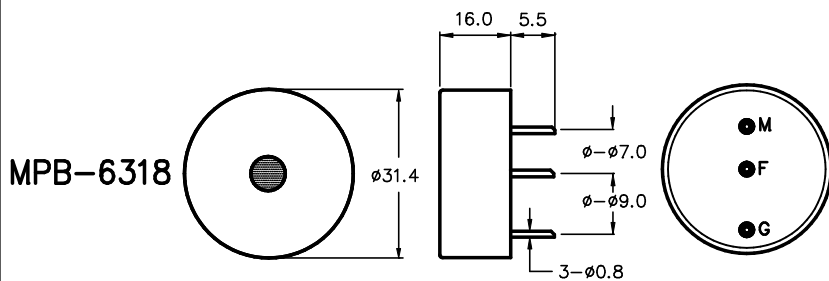
## SELF-DRIVEN STYLE

**6000  
series**

- High sound output.
- Low current drain.
- High efficiency.

MODEL	MPB-6318	MPB-6316
RESONANT FREQUENCY	3600 Hz $\pm$ 500 Hz	3300 Hz $\pm$ 500 Hz
OPERATING VOLTAGE	3 - 30 V	3 - 28 V
RATED VOLTAGE	12 V	
DRIVE CIRCUIT	SELF DRIVEN	
SOUND PRESSURE *	88 dB MIN. @ 30 cm	82 dB MIN. @ 30 cm
CURRENT CONSUMPTION *	10 mA MAX.	7 mA MAX.
CONNECTION STYLE	PCB MOUNT (PINS)	FLANGE / LEADS
OPERATING TEMPERATURE	-20° to +60° C	

\* VALUES @ RATED VOLTAGE USING REFERENCE DRIVE CIRCUIT



ALL DIMENSIONS IN mm

SPECIFICATIONS SUBJECT TO CHANGE WITHOUT NOTIFICATION / MODELS SHOWN SUBJECT TO LIMITED WARRANTY

**SALES OFFICE (516)-767-6644**

**CORPORATE OFFICE**

P.O. Box 575, Scotch Plains, NJ. 07076

Phone: (908)-322-2977 Fax: (908)-322-2358

E-mail: [info@monacocomponents.com](mailto:info@monacocomponents.com)

[www.monacocomponents.com](http://www.monacocomponents.com)