

# MONACO COMPONENTS, INC.

## SELF-DRIVEN STYLE

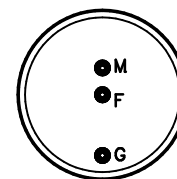
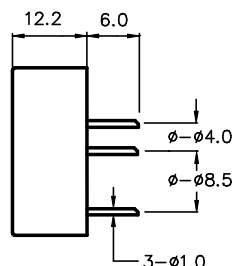
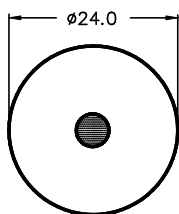
**6000  
series**

- High sound output.
- Low current drain.
- High efficiency.

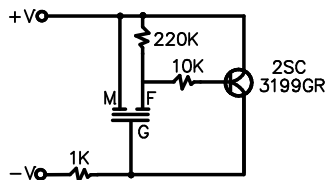
MODEL	MPB-6214
RESONANT FREQUENCY	3200 Hz $\pm$ 500 Hz
OPERATING VOLTAGE	3 - 28 V
RATED VOLTAGE	12 V
DRIVE CIRCUIT	SELF DRIVEN
SOUND PRESSURE *	74 dB MIN. @ 30 cm
CURRENT CONSUMPTION *	7 mA MAX.
CONNECTION STYLE	PCB MOUNT (PINS)
OPERATING TEMPERATURE	-20° to +60° C

\* VALUES @ RATED VOLTAGE USING REFERENCE DRIVE CIRCUIT

MPB-6214



The current consumption and the sound pressure level are measured by using the recommended driving circuit shown here. This is only one example.



ALL DIMENSIONS IN mm

SPECIFICATIONS SUBJECT TO CHANGE WITHOUT NOTIFICATION / MODELS SHOWN SUBJECT TO LIMITED WARRANTY

**SALES OFFICE (516)-767-6644**

**CORPORATE OFFICE**

P.O. Box 575, Scotch Plains, NJ. 07076

Phone: (908)-322-2977 Fax: (908)-322-2358

E-mail: [info@monacocomponents.com](mailto:info@monacocomponents.com)

[www.monacocomponents.com](http://www.monacocomponents.com)