

# MONACO COMPONENTS, INC.

EXTERNAL DRIVE STYLE      PCB MOUNTING

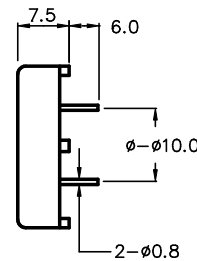
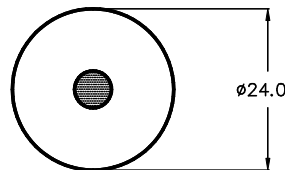
**4000  
series**

- Small size and lightweight.
- High sound output.
- Low power consumption.

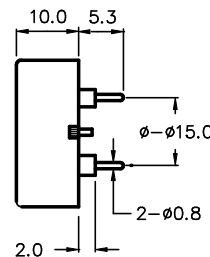
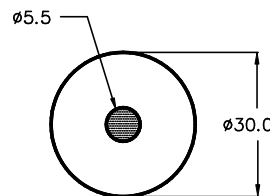
MODEL	MPF-4210	MPF-4320
RESONANT FREQUENCY	4000 Hz	2500 Hz
OPERATING VOLTAGE	60 V <sub>p-p</sub> MAX.	30 V <sub>p-p</sub> MAX.
RATED VOLTAGE	9 V <sub>p-p</sub> SQUAREWAVE	3.0 V <sub>rms</sub> SINEWAVE
CAPACITANCE	17000 ± 30% pF @ 120 Hz	25000 ± 30% pF @ 1000 Hz
DRIVE CIRCUIT	EXTERNAL	EXTERNAL
SOUND PRESSURE *	85 dBA MIN. @ 10 cm @ 4000 Hz	80 dBA MIN. @ 10 cm @ 2500 Hz
CURRENT CONSUMPTION *	1.0 mA MAX.	1.5 mA MAX.
tone	DEPENDENT ON DRIVE CIRCUIT USED	DEPENDENT ON DRIVE CIRCUIT USED
CONNECTION STYLE	PCB MOUNT (PINS)	PCB MOUNT (PINS)
OPERATING TEMPERATURE	-20° to +60° C	-20° to +70° C

\* VALUES AT RATED VOLTAGE

MPF-4210



MPF-4320



ALL DIMENSIONS IN mm

SPECIFICATIONS SUBJECT TO CHANGE WITHOUT NOTIFICATION / MODELS SHOWN SUBJECT TO LIMITED WARRANTY

**SALES OFFICE (516)-767-6644**

CORPORATE OFFICE

P.O. Box 575, Scotch Plains, NJ. 07076

Phone: (908)-322-2977 Fax: (908)-322-2358

E-mail: [info@monacocomponents.com](mailto:info@monacocomponents.com)

[www.monacocomponents.com](http://www.monacocomponents.com)