

# MONACO COMPONENTS, INC.

EXTERNAL DRIVE STYLE      PCB MOUNTING

**4000  
series**

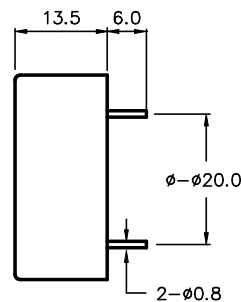
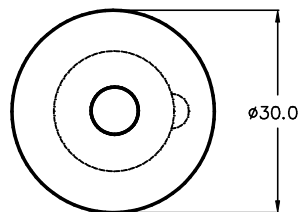
- Compact design.
- Three pins for PCB mounting.

MODEL	MPB-4300	MPB-4302
RESONANT FREQUENCY	2000 Hz $\pm$ 500 Hz	
OPERATING VOLTAGE	30 V <sub>p-p</sub> MAX.	
RATED VOLTAGE	10 V <sub>p-p</sub> SQUAREWAVE	
CAPACITANCE	45000 $\pm$ 30% pF	
DRIVE CIRCUIT	EXTERNAL	
SOUND PRESSURE *	93 dB MIN. @ 10 cm @ 2000 Hz	
CURRENT CONSUMPTION *	11 mA MAX.	
tone	DEPENDENT ON DRIVE CIRCUIT USED	
CONNECTION STYLE	PCB MOUNT (PINS)	
OPERATING TEMPERATURE	-20° to +60° C	

\* VALUES AT RATED VOLTAGE

**MPB-4300**

**MPB-4302 : WAVE SOLDERABLE AND WASHABLE**



ALL DIMENSIONS IN mm

SPECIFICATIONS SUBJECT TO CHANGE WITHOUT NOTIFICATION / MODELS SHOWN SUBJECT TO LIMITED WARRANTY

**SALES OFFICE (516)-767-6644**

**CORPORATE OFFICE**

P.O. Box 575, Scotch Plains, NJ. 07076

Phone: (908)-322-2977 Fax: (908)-322-2358

E-mail: [info@monacocomponents.com](mailto:info@monacocomponents.com)

[www.monacocomponents.com](http://www.monacocomponents.com)