

MONACO COMPONENTS, INC.

EXTERNAL DRIVE STYLE PCB MOUNTING

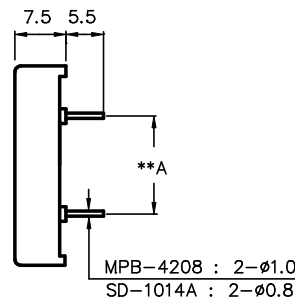
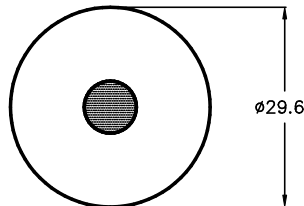
**4000
series**

- Small size and lightweight.
- High sound output.
- Low power consumption.

MODEL	MPB-4208	SD-1014 A
RESONANT FREQUENCY	2800 Hz \pm 500Hz	
OPERATING VOLTAGE	30 V _{p-p} MAX.	
RATED VOLTAGE	10 V _{p-p} SQUAREWAVE	
CAPACITANCE	18000 \pm 30% pF	
DRIVE CIRCUIT	EXTERNAL	
SOUND PRESSURE *	95 dB MIN. @ 10 cm @ 2800 Hz	
CURRENT CONSUMPTION *	1.0 mA MAX.	
tone	DEPENDENT ON DRIVE CIRCUIT USED	
CONNECTION STYLE	PCB MOUNT (PINS : 15.24)	PCB MOUNT (PINS : 13.0)
OPERATING TEMPERATURE	-20° to +60° C	

* VALUES AT RATED VOLTAGE

MPB-4208
SD-1014 A



(**A: SEE CONNECTION STYLE)

ALL DIMENSIONS IN mm

SPECIFICATIONS SUBJECT TO CHANGE WITHOUT NOTIFICATION / MODELS SHOWN SUBJECT TO LIMITED WARRANTY

SALES OFFICE (516)-767-6644

CORPORATE OFFICE

P.O. Box 575, Scotch Plains, NJ. 07076

Phone: (908)-322-2977 Fax: (908)-322-2358

E-mail: info@monacocomponents.com

www.monacocomponents.com