

MONACO COMPONENTS, INC.

EXTERNAL DRIVE STYLE PCB MOUNTING

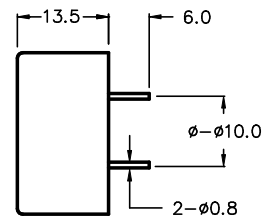
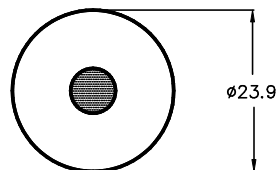
**4000
series**

- Small size and lightweight.
- High sound output.
- Low power consumption.

MODEL	MPB-4202
RESONANT FREQUENCY	2400 Hz \pm 500 Hz
OPERATING VOLTAGE	30 V _{p-p} MAX.
RATED VOLTAGE	10 V _{p-p} SQUAREWAVE
CAPACITANCE	45000 \pm 30% pF
DRIVE CIRCUIT	EXTERNAL
SOUND PRESSURE *	88 dB MIN. @ 10 cm @ 2400 Hz
CURRENT CONSUMPTION *	3 mA MAX.
tone	DEPENDENT ON DRIVE CIRCUIT USED
CONNECTION STYLE	PCB MOUNT (PINS)
OPERATING TEMPERATURE	-20° to +60° C

* VALUES AT RATED VOLTAGE

MPB-4202



ALL DIMENSIONS IN mm

SPECIFICATIONS SUBJECT TO CHANGE WITHOUT NOTIFICATION / MODELS SHOWN SUBJECT TO LIMITED WARRANTY

SALES OFFICE (516)-767-6644

CORPORATE OFFICE

P.O. Box 575, Scotch Plains, NJ. 07076

Phone: (908)-322-2977 Fax: (908)-322-2358

E-mail: info@monacocomponents.com

www.monacocomponents.com