

# MONACO COMPONENTS, INC.

EXTERNAL DRIVE STYLE      PCB MOUNTING

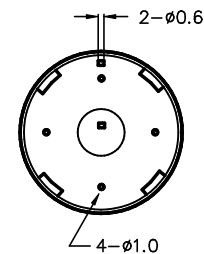
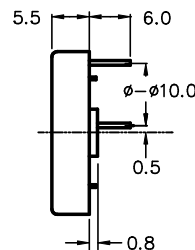
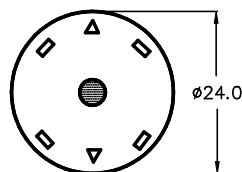
**4000  
series**

- Small size and lightweight.
- High sound output.
- Low power consumption.

MODEL	MPA-4206
RESONANT FREQUENCY	4000 Hz $\pm$ 500 Hz
OPERATING VOLTAGE	30 V <sub>p-p</sub> MAX.
RATED VOLTAGE	10 V <sub>p-p</sub> SINEWAVE
CAPACITANCE	17000 $\pm$ 30% pF
DRIVE CIRCUIT	EXTERNAL
SOUND PRESSURE *	98 dB MIN. @ 30 cm @ 4000 Hz
RESONANT RESISTANCE	300 OHMS MAX.
tone	DEPENDENT ON DRIVE CIRCUIT USED
CONNECTION STYLE	PCB MOUNT (PINS)
OPERATING TEMPERATURE	-20° to +60° C

\* VALUES AT RATED VOLTAGE

MPA-4206



ALL DIMENSIONS IN mm

SPECIFICATIONS SUBJECT TO CHANGE WITHOUT NOTIFICATION / MODELS SHOWN SUBJECT TO LIMITED WARRANTY

**SALES OFFICE (516)-767-6644**

CORPORATE OFFICE

P.O. Box 575, Scotch Plains, NJ. 07076

Phone: (908)-322-2977 Fax: (908)-322-2358

E-mail: [info@monacocomponents.com](mailto:info@monacocomponents.com)

[www.monacocomponents.com](http://www.monacocomponents.com)