

# MONACO COMPONENTS, INC.

EXTERNAL DRIVE STYLE      PCB MOUNTING

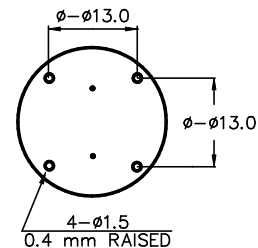
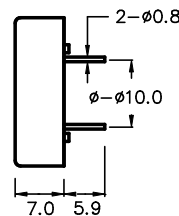
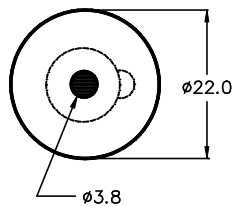
**4000  
series**

- Small size and lightweight.
- High sound output.
- Low power consumption.

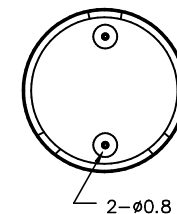
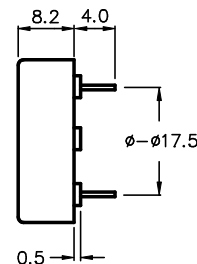
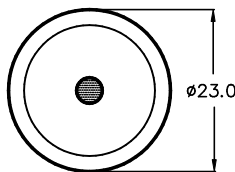
MODEL	MPA-4200	MPF-4228
RESONANT FREQUENCY	4000 Hz $\pm$ 500 Hz	3000 Hz
OPERATING VOLTAGE	30 V <sub>p-p</sub> MAX.	30 V <sub>p-p</sub> MAX.
RATED VOLTAGE	10 V <sub>p-p</sub> SINEWAVE	6 V <sub>rms</sub> SINEWAVE
CAPACITANCE	12000 $\pm$ 30% pF	12000 $\pm$ 30% pF @ 120 Hz
DRIVE CIRCUIT	EXTERNAL	EXTERNAL
SOUND PRESSURE *	95 dB @ 30 cm	70 dBA MIN. @ 30 cm @ 3000 Hz
RESONANT RESISTANCE	300 OHMS MAX.	—
TONE	DEPENDENT ON DRIVE CIRCUIT USED	DEPENDENT ON DRIVE CIRCUIT USED
CONNECTION STYLE	PCB MOUNT (PINS)	PCB MOUNT (PINS)
OPERATING TEMPERATURE	-20° to +110° C	-30° to +60° C

\* VALUES AT RATED VOLTAGE

**MPA-4200**  
SEALED AND WASHABLE



**MPF-4228**



ALL DIMENSIONS IN mm

SPECIFICATIONS SUBJECT TO CHANGE WITHOUT NOTIFICATION / MODELS SHOWN SUBJECT TO LIMITED WARRANTY

**SALES OFFICE (516)-767-6644**

CORPORATE OFFICE

P.O. Box 575, Scotch Plains, NJ. 07076

Phone: (908)-322-2977 Fax: (908)-322-2358

E-mail: [info@monacocomponents.com](mailto:info@monacocomponents.com)

[www.monacocomponents.com](http://www.monacocomponents.com)