

MONACO COMPONENTS, INC.

BUILT-IN DRIVE STYLE FLANGE MOUNTING

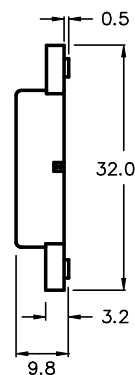
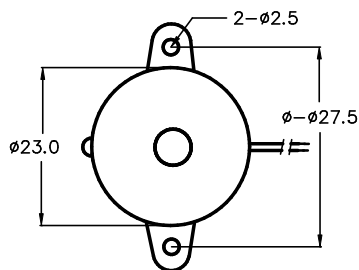
**3000
series**

- High sound output.
- Low current drain.

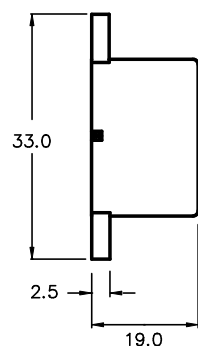
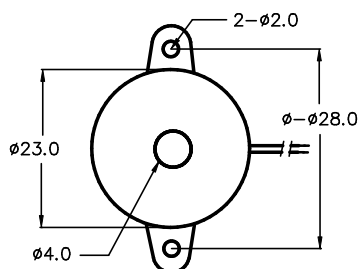
MODEL	MPF-3256	MPF-3220	MPF-3222
FREQUENCY *	3500 HZ ± 500 Hz	3300 HZ ± 500 Hz	3400 HZ ± 500 Hz
DRIVING CIRCUIT	BUILT IN		
OPERATING VOLTAGE	3 - 28 V	1 - 18 V	18 - 28 V
RATED VOLTAGE	12 VDC	12 V	24 V
SOUND PRESSURE *	85 dBA MIN. @ 30 cm	88 dBA MIN. @ 30 cm	90 dBA MIN. @ 30 cm
CURRENT CONSUMPTION *	10 mA MAX.	15 mA MAX.	20 mA MAX.
tone	CONTINUOUS		
CONNECTION STYLE	FLANGE / LEADS		
OPERATING TEMPERATURE	-20° to +60° C		

* VALUES AT RATED VOLTAGE

MPF-3256



MPF-3220
MPF-3222



ALL DIMENSIONS IN mm

SPECIFICATIONS SUBJECT TO CHANGE WITHOUT NOTIFICATION / MODELS SHOWN SUBJECT TO LIMITED WARRANTY

SALES OFFICE (516)-767-6644

CORPORATE OFFICE

P.O. Box 575, Scotch Plains, NJ. 07076

Phone: (908)-322-2977 Fax: (908)-322-2358

E-mail: info@monacocomponents.com

www.monacocomponents.com