

MONACO COMPONENTS, INC.

BUILT-IN DRIVE STYLE FLANGE MOUNTING

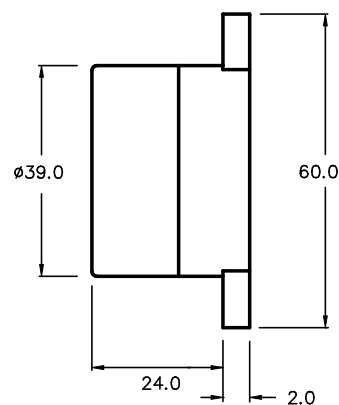
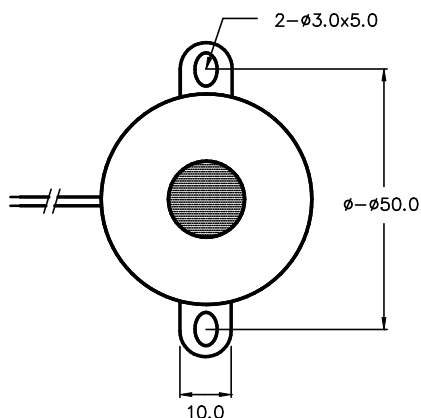
**3000
series**

- Three tone types available
- Rich sound output
- Low current drain

MODEL	MPA-3334	MPA-3335	MPA-3336	MPA-3338
FREQUENCY *	3000 HZ ± 500 Hz			
DRIVING CIRCUIT	BUILT IN			
OPERATING VOLTAGE	3 - 24 V			
RATED VOLTAGE	12 V			
SOUND PRESSURE *	101 dB @ 100 cm	105 dB @ 100 cm	101 dB @ 100 cm	
CURRENT CONSUMPTION *	18 mA			
tone	CONTINUOUS		PULSE	TRIGGER
CONNECTION STYLE	FLANGE / LEADS			
OPERATING TEMPERATURE	-20° to +60° C			

* VALUES AT RATED VOLTAGE

MPA-3334
MPA-3335
MPA-3336
MPA-3338
COLOR : IVORY



ALL DIMENSIONS IN mm

SPECIFICATIONS SUBJECT TO CHANGE WITHOUT NOTIFICATION / MODELS SHOWN SUBJECT TO LIMITED WARRANTY

SALES OFFICE (516)-767-6644

CORPORATE OFFICE

P.O. Box 575, Scotch Plains, NJ. 07076

Phone: (908)-322-2977 Fax: (908)-322-2358

E-mail: info@monacocomponents.com

www.monacocomponents.com