

MONACO COMPONENTS, INC.

BUILT-IN DRIVE STYLE FLANGE MOUNTING

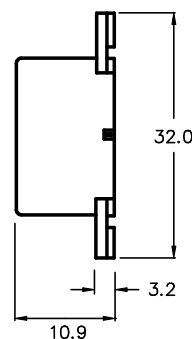
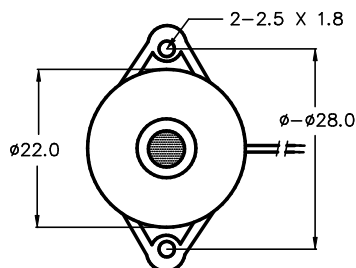
**3000
series**

- Small size and lightweight.
- Rich sound output
- Low current drain.

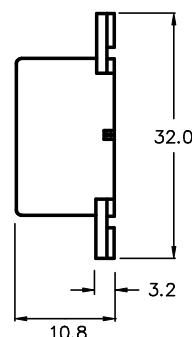
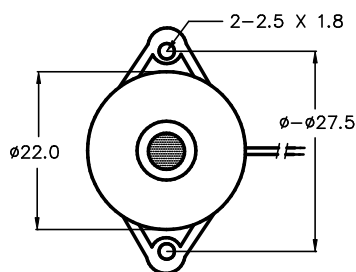
MODEL	MPA-3202	MPA-3204	MPF-3212
FREQUENCY *	3500 HZ ± 500 Hz	5600 HZ ± 500 Hz	4500 HZ ± 500 Hz
DRIVING CIRCUIT	BUILT IN		
OPERATING VOLTAGE	3 - 24 V		3 - 30 V
RATED VOLTAGE	12 V		12 VDC
SOUND PRESSURE *	75 dB MIN. @ 30 cm	85 dB MIN. @ 30 cm	85 dBA MIN. @ 30 cm
CURRENT CONSUMPTION *	5 mA MAX.		3 mA MAX.
tone	CONTINUOUS		
CONNECTION STYLE	FLANGE / LEADS		
OPERATING TEMPERATURE	-20° to +70° C		-20° to +60° C

* VALUES AT RATED VOLTAGE

MPA-3202
MPA-3204



MPF-3212



ALL DIMENSIONS IN mm

SPECIFICATIONS SUBJECT TO CHANGE WITHOUT NOTIFICATION / MODELS SHOWN SUBJECT TO LIMITED WARRANTY

SALES OFFICE (516)-767-6644

CORPORATE OFFICE

P.O. Box 575, Scotch Plains, NJ. 07076

Phone: (908)-322-2977 Fax: (908)-322-2358

E-mail: info@monacocomponents.com

www.monacocomponents.com