

MONACO COMPONENTS, INC.

BUILT-IN DRIVE STYLE PCB MOUNTING

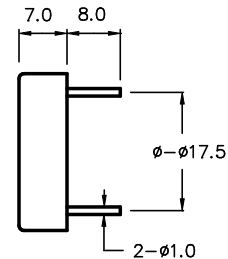
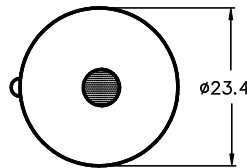
**2000
series**

- Small size and lightweight.
- Sealed and washable.
- Low current drain.

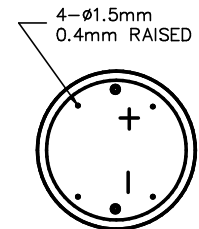
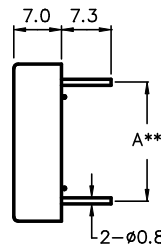
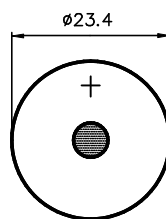
MODEL	MPA-2210	MPA-2212	MPA-2214	MPA-2216
FREQUENCY *	3500 HZ ± 500 HZ	5600 HZ ± 500 HZ	4000 HZ ± 500 Hz	
DRIVING CIRCUIT	BUILT IN			
OPERATING VOLTAGE	3 - 24 V		3 - 15 V	
RATED VOLTAGE	12 V			
SOUND PRESSURE *	75 dB MIN. @ 30 cm	85 dB MIN. @ 30 cm	75 dB MIN. @ 30 cm	
CURRENT CONSUMPTION *	5 mA MAX.			
tone	CONTINUOUS			
CONNECTION STYLE	PCB MOUNT (PINS)		PCB MOUNT (PINS) : 15.0	PCB MOUNT (PINS) : 17.5
OPERATING TEMPERATURE	-20° to +70° C		-20° to +105° C	

* VALUES AT RATED VOLTAGE

**MPA-2210
MPA-2212**
COLOR : IVORY



**MPA-2214
MPA-2216**
(A**: SEE CONNECTION STYLE)
SEALED AND WASHABLE
POLYCARBONATE HOUSING MATERIAL



ALL DIMENSIONS IN mm

SPECIFICATIONS SUBJECT TO CHANGE WITHOUT NOTIFICATION / MODELS SHOWN SUBJECT TO LIMITED WARRANTY

SALES OFFICE (516)-767-6644

CORPORATE OFFICE

P.O. Box 575, Scotch Plains, NJ. 07076

Phone: (908)-322-2977 Fax: (908)-322-2358

E-mail: info@monacocomponents.com

www.monacocomponents.com