

MONACO COMPONENTS, INC.

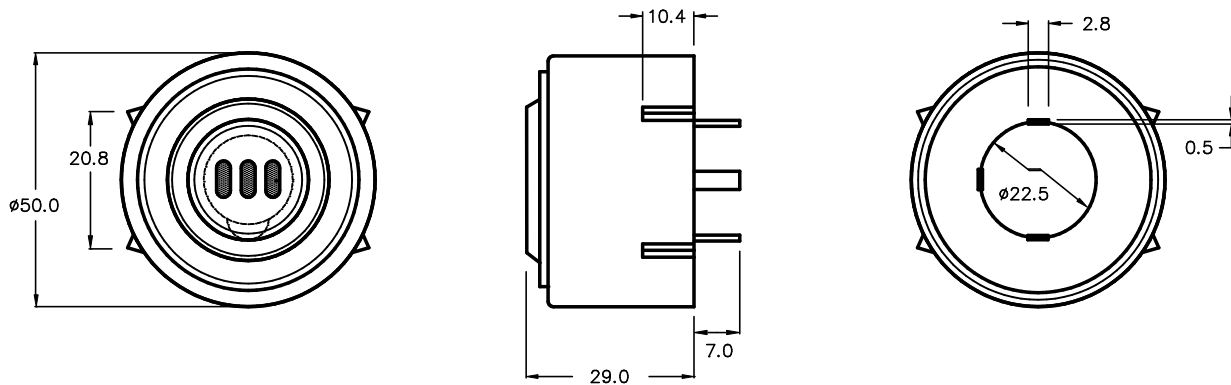
BUILT-IN DRIVE STYLE PCB MOUNTING

**2000
series**

- High sound output
- High efficiency
- Wave solderable and washable

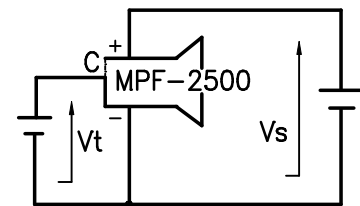
MODEL	MPF-2500
FREQUENCY *	2500 HZ ± 500 Hz
DRIVING CIRCUIT	BUILT IN
OPERATING VOLTAGE	5 - 13 V
RATED VOLTAGE	12 V
SOUND PRESSURE *	108 dBA MIN. @ 25.4 cm
CURRENT CONSUMPTION *	75 mA MAX.
TONE	CONTINUOUS
CONNECTION STYLE	PCB MOUNT (PLATE TERMINALS)
OPERATING TEMPERATURE	-20° to +60° C

* VALUES AT RATED VOLTAGE



SEALED AND WASHABLE
MAXIMUM TRIGGER CURRENT @ 12 V : 2 mA

ALL DIMENSIONS IN mm



CONNECTION DIAGRAM

SPECIFICATIONS SUBJECT TO CHANGE WITHOUT NOTIFICATION / MODELS SHOWN SUBJECT TO LIMITED WARRANTY

SALES OFFICE (516)-767-6644

CORPORATE OFFICE

P.O. Box 575, Scotch Plains, NJ. 07076

Phone: (908)-322-2977 Fax: (908)-322-2358

E-mail: info@monacocomponents.com

www.monacocomponents.com