

MONACO COMPONENTS, INC.

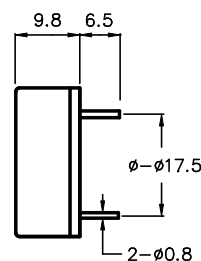
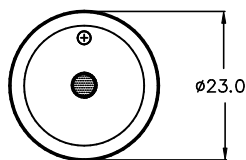
BUILT-IN DRIVE STYLE PCB MOUNTING

**2000
series**

- Small size and lightweight.
- High efficiency
- Low current drain.

MODEL	MPF-2262	MPF-2264
FREQUENCY *	3500 HZ ± 1000 Hz	
DRIVING CIRCUIT	BUILT IN	
OPERATING VOLTAGE	3 - 18 VDC	18 - 28 VDC
RATED VOLTAGE	12 VDC	24 VDC
SOUND PRESSURE *	78 dB MIN. @ 30 cm	80 dB MIN. @ 30 cm
CURRENT CONSUMPTION *	7 mA MAX.	14 mA MAX.
tone	CONTINUOUS	
CONNECTION STYLE	PCB MOUNT (PINS)	
OPERATING TEMPERATURE	-20° to +105° C	

* VALUES AT RATED VOLTAGE



COLOR : WHITE
PBT HOUSING MATERIAL

ALL DIMENSIONS IN mm

SPECIFICATIONS SUBJECT TO CHANGE WITHOUT NOTIFICATION / MODELS SHOWN SUBJECT TO LIMITED WARRANTY

SALES OFFICE (516)-767-6644

CORPORATE OFFICE

P.O. Box 575, Scotch Plains, NJ. 07076

Phone: (908)-322-2977 Fax: (908)-322-2358

E-mail: info@monacocomponents.com

www.monacocomponents.com