

MONACO COMPONENTS, INC.

BUILT-IN DRIVE STYLE PCB MOUNTING

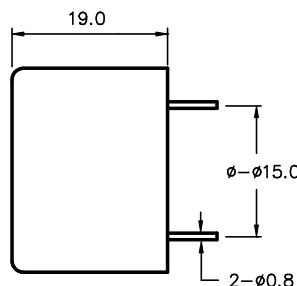
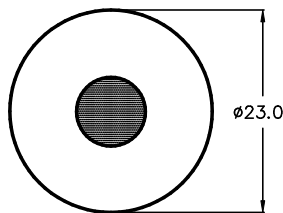
**2000
series**

- Small size and lightweight.
- High efficiency.
- Low current drain.

MODEL	MPF-2250	MPF-2252
FREQUENCY *	3300 HZ ± 500 Hz	3400 HZ ± 500 Hz
DRIVING CIRCUIT	BUILT IN	
OPERATING VOLTAGE	1 - 18 V	18 - 28 V
RATED VOLTAGE	12 V	24 V
SOUND PRESSURE *	88 dBA MIN. @ 30 cm	90 dBA MIN. @ 30 cm
CURRENT CONSUMPTION *	5 mA MAX.	20 mA MAX.
TONE	CONTINUOUS	
CONNECTION STYLE	PCB MOUNT (PINS)	
OPERATING TEMPERATURE	-20° to +60° C	

* VALUES AT RATED VOLTAGE

MPF-2250
MPF-2252



ALL DIMENSIONS IN mm

SPECIFICATIONS SUBJECT TO CHANGE WITHOUT NOTIFICATION / MODELS SHOWN SUBJECT TO LIMITED WARRANTY

SALES OFFICE (516)-767-6644

CORPORATE OFFICE

P.O. Box 575, Scotch Plains, NJ. 07076

Phone: (908)-322-2977 Fax: (908)-322-2358

E-mail: info@monacocomponents.com

www.monacocomponents.com