

MONACO COMPONENTS, INC.

BUILT-IN DRIVE STYLE PCB MOUNTING

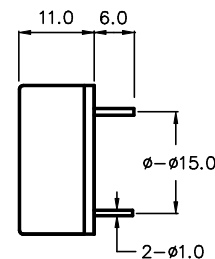
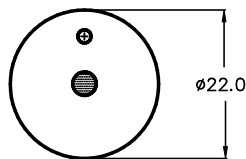
**2000
series**

- Small size and lightweight.
- High efficiency
- Low current drain.

MODEL	MPA-2204	MPA-2208
FREQUENCY *	4000 HZ ± 500 Hz	
DRIVING CIRCUIT	BUILT IN	
OPERATING VOLTAGE	3 - 15 VDC	
RATED VOLTAGE	12 VDC	
SOUND PRESSURE *	80 dB @ 30 cm	
CURRENT CONSUMPTION *	4.5 mA	
TONE	CONTINUOUS	
CONNECTION STYLE	PCB MOUNT (PINS) : 15.0	PCB MOUNT (PINS) : 17.5
OPERATING TEMPERATURE	-30° to +110° C	

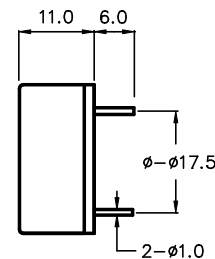
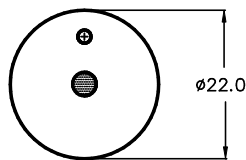
* VALUES AT RATED VOLTAGE

MPA-2204



COLOR : IVORY
POLYCARBONATE HOUSING MATERIAL

MPA-2208



ALL DIMENSIONS IN mm

SPECIFICATIONS SUBJECT TO CHANGE WITHOUT NOTIFICATION / MODELS SHOWN SUBJECT TO LIMITED WARRANTY

SALES OFFICE (516)-767-6644

CORPORATE OFFICE

P.O. Box 575, Scotch Plains, NJ. 07076

Phone: (908)-322-2977 Fax: (908)-322-2358

E-mail: info@monacocomponents.com

www.monacocomponents.com