

MONACO COMPONENTS, INC.

BUILT-IN DRIVE STYLE PCB MOUNTING

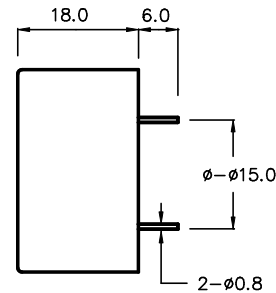
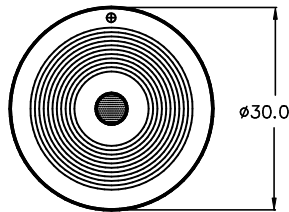
**2000
series**

- High sound output.
- High efficiency.
- Low current drain.

MODEL	MPA-2300	MPA-2302
FREQUENCY *	2000 HZ ± 500 Hz	
DRIVING CIRCUIT	BUILT IN	
OPERATING VOLTAGE	3 - 15 V	
RATED VOLTAGE	12 V	
SOUND PRESSURE *	90 dB @ 30 cm	
CURRENT CONSUMPTION *	10 mA	
TONE	CONTINUOUS	PULSE
CONNECTION STYLE	PCB MOUNT (PINS)	
OPERATING TEMPERATURE	-10° to +60° C	

* VALUES AT RATED VOLTAGE

MPA-2300
MPA-2302



ALL DIMENSIONS IN mm

SPECIFICATIONS SUBJECT TO CHANGE WITHOUT NOTIFICATION / MODELS SHOWN SUBJECT TO LIMITED WARRANTY

SALES OFFICE (516)-767-6644

CORPORATE OFFICE

P.O. Box 575, Scotch Plains, NJ. 07076

Phone: (908)-322-2977 Fax: (908)-322-2358

E-mail: info@monacocomponents.com

www.monacocomponents.com