

# MONACO COMPONENTS, INC.

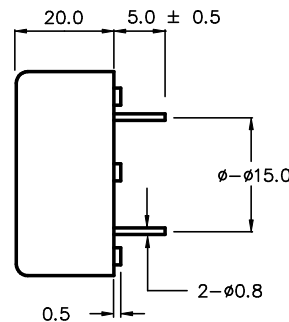
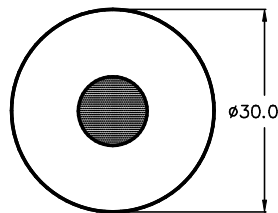
BUILT-IN DRIVE STYLE      PCB MOUNTING

**2000  
series**

- High sound output
- High efficiency
- Wave solderable and washable

MODEL	MPF-2321	MPF-2322	MPF-2323
FREQUENCY *	3500 HZ ± 500 Hz		
DRIVING CIRCUIT	BUILT IN		
OPERATING VOLTAGE	2 - 5 V	3 - 20 V	3 - 15 V
RATED VOLTAGE	3 V	12 V	
SOUND PRESSURE *	90 dBA MIN. @ 30 cm		85 dBA MIN. @ 30 cm
CURRENT CONSUMPTION *	5 mA MAX.	10 mA MAX.	15 mA MAX.
tone	CONTINUOUS		PULSE
CONNECTION STYLE	PCB MOUNT (PINS)		
OPERATING TEMPERATURE	-25° to +65° C		

\* VALUES AT RATED VOLTAGE



ALL DIMENSIONS IN mm

SPECIFICATIONS SUBJECT TO CHANGE WITHOUT NOTIFICATION / MODELS SHOWN SUBJECT TO LIMITED WARRANTY

**SALES OFFICE (516)-767-6644**

CORPORATE OFFICE

P.O. Box 575, Scotch Plains, NJ. 07076

Phone: (908)-322-2977 Fax: (908)-322-2358

E-mail: [info@monacocomponents.com](mailto:info@monacocomponents.com)

[www.monacocomponents.com](http://www.monacocomponents.com)