

MONACO COMPONENTS, INC.

BUILT-IN DRIVE STYLE PCB MOUNTING

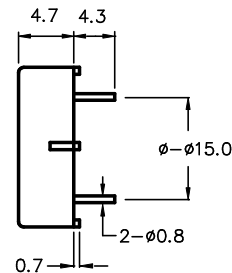
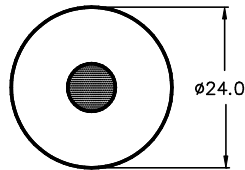
**2000
series**

- Small size and lightweight.
- High efficiency.
- Low current drain.

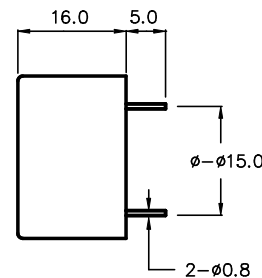
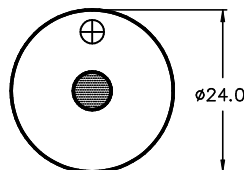
MODEL	MPF-2260	MPA-2228
FREQUENCY *	3700 HZ ± 500 Hz	2700 HZ ± 500 Hz
DRIVING CIRCUIT	BUILT IN	
OPERATING VOLTAGE	3 - 24 V	
RATED VOLTAGE	12 V	
SOUND PRESSURE *	80 dBA MIN. @ 30 cm	90 dB @ 30 cm
CURRENT CONSUMPTION *	8 mA MAX.	10 mA MAX.
TONE	CONTINUOUS	
CONNECTION STYLE	PCB MOUNT (PINS)	
OPERATING TEMPERATURE	-20° to +105° C	-10° to +60° C

* VALUES AT RATED VOLTAGE

MPF-2260
PBT HOUSING MATERIAL



MPA-2228
COLOR : IVORY



ALL DIMENSIONS IN mm

SPECIFICATIONS SUBJECT TO CHANGE WITHOUT NOTIFICATION / MODELS SHOWN SUBJECT TO LIMITED WARRANTY

SALES OFFICE (516)-767-6644

CORPORATE OFFICE

P.O. Box 575, Scotch Plains, NJ. 07076

Phone: (908)-322-2977 Fax: (908)-322-2358

E-mail: info@monacocomponents.com

www.monacocomponents.com