

MONACO COMPONENTS, INC.

BUILT-IN DRIVE STYLE PCB MOUNTING

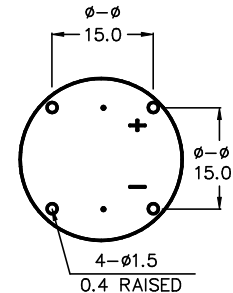
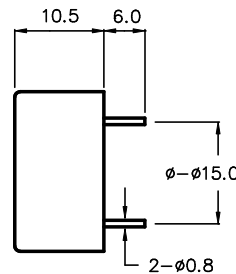
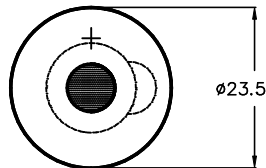
**2000
series**

- Small size and lightweight.
- Sealed and washable.
- Low current drain.

MODEL	MPA-2224	MPA-2226	MPA-2225	MPA-2227
FREQUENCY *	3800 HZ ± 500 Hz			
DRIVING CIRCUIT	BUILT IN			
OPERATING VOLTAGE	3 - 24 V			
RATED VOLTAGE	12 V	24 V	12 V	24 V
SOUND PRESSURE *	85 dB @ 30 cm			
CURRENT CONSUMPTION *	10 mA			
-tone	CONTINUOUS			
CONNECTION STYLE	PCB MOUNT (PINS) : 15.0		PCB MOUNT (PINS) : 17.5	
OPERATING TEMPERATURE	-20° to +110° C			

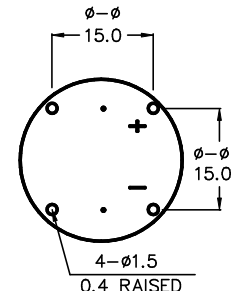
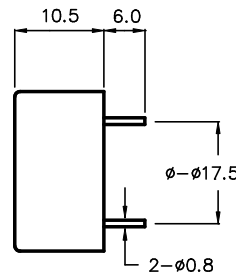
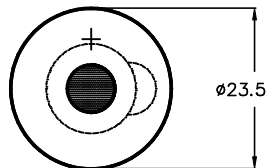
* VALUES AT RATED VOLTAGE

MPA-2224
MPA-2226



COLOR : IVORY
POLYCARBONATE HOUSING MATERIAL
SEALED AND WASHABLE

MPA-2225
MPA-2227



ALL DIMENSIONS IN mm

SPECIFICATIONS SUBJECT TO CHANGE WITHOUT NOTIFICATION / MODELS SHOWN SUBJECT TO LIMITED WARRANTY

SALES OFFICE (516)-767-6644

CORPORATE OFFICE

P.O. Box 575, Scotch Plains, NJ. 07076

Phone: (908)-322-2977 Fax: (908)-322-2358

E-mail: info@monacocomponents.com

www.monacocomponents.com