

MONACO COMPONENTS, INC.

BUILT-IN DRIVE STYLE PCB MOUNTING

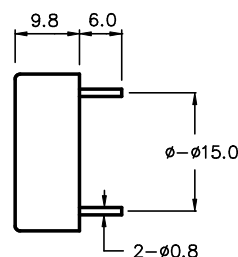
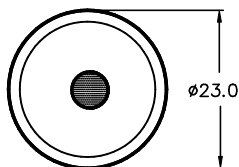
**2000
series**

- Small size and lightweight.
- High efficiency.
- Low current drain.

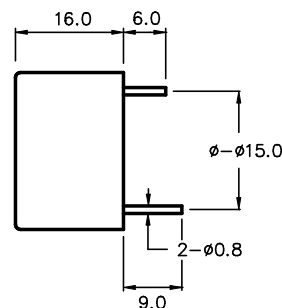
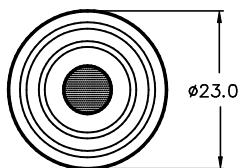
MODEL	MPF-2234	MPF-2235	MPF-2236	MPF-2238
FREQUENCY *	3500 HZ ± 500 Hz		2900 HZ ± 500 Hz	
DRIVING CIRCUIT	BUILT IN			
OPERATING VOLTAGE	1.5 - 28 V	12 - 36 V	3 - 20 V	
RATED VOLTAGE	12 V	24 V	12 V	
SOUND PRESSURE *	85 dBA MIN. @ 30 cm		85 dBA @ 30 cm	
CURRENT CONSUMPTION *	10 mA MAX.		15 mA MAX.	8 mA MAX.
-tone	CONTINUOUS			
CONNECTION STYLE	PCB MOUNT (PINS)			
OPERATING TEMPERATURE	-20° to +60° C			

* VALUES AT RATED VOLTAGE

MPF-2234
MPF-2235
PBT HOUSING MATERIAL



MPF-2236
MPF-2238 : SEALED



ALL DIMENSIONS IN mm

SPECIFICATIONS SUBJECT TO CHANGE WITHOUT NOTIFICATION / MODELS SHOWN SUBJECT TO LIMITED WARRANTY

SALES OFFICE (516)-767-6644

CORPORATE OFFICE

P.O. Box 575, Scotch Plains, NJ. 07076

Phone: (908)-322-2977 Fax: (908)-322-2358

E-mail: info@monacocomponents.com

www.monacocomponents.com