

MONACO COMPONENTS, INC.

BUILT-IN DRIVE STYLE PCB MOUNTING

**2000
series**

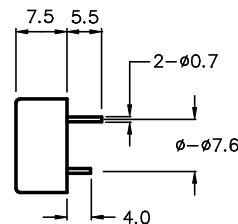
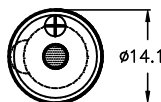
- Small size and lightweight.
- Wave solderable and washable.
- Rich sound output and low current drain.

| MODEL | MPF-2105 | MPF-2106 | MPF-2108 |
|-----------------------|---------------------|---------------------|---------------------|
| FREQUENCY * | 4000 HZ ± 500 Hz | | |
| DRIVING CIRCUIT | BUILT IN | | |
| OPERATING VOLTAGE | 3 - 16 V | 1 - 12 V | 1 - 18 V |
| RATED VOLTAGE | 12 V | 5 V | 12 V |
| SOUND PRESSURE * | 80 dBA MIN. @ 10 cm | 83 dBA MIN. @ 10 cm | 85 dBA MIN. @ 10 cm |
| CURRENT CONSUMPTION * | 7 mA MAX. | 15 mA MAX. | 20 mA MAX. |
| tone | CONTINUOUS | | |
| CONNECTION STYLE | PCB MOUNT (PINS) | | |
| OPERATING TEMPERATURE | -20° to +60° C | -10° to +45° C | |

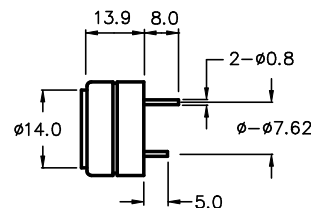
* VALUES AT RATED VOLTAGE

MPF-2105

SEALED AND WASHABLE
NORYL HOUSING MATERIAL



**MPF-2106
MPF-2108**



ALL DIMENSIONS IN mm

SPECIFICATIONS SUBJECT TO CHANGE WITHOUT NOTIFICATION / MODELS SHOWN SUBJECT TO LIMITED WARRANTY

SALES OFFICE (516)-767-6644

CORPORATE OFFICE

P.O. Box 575, Scotch Plains, NJ. 07076

Phone: (908)-322-2977 Fax: (908)-322-2358

E-mail: info@monacocomponents.com

www.monacocomponents.com